

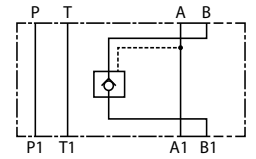
# SOLENOID VALVE

Electroválvulas  
Magnetventile  
Électrovalve

## NG10 Pilot operated single check valve-B



Válvula antirretorno simple pilotada NG10 -B  
Rückschlagventil NG10-B doppelt pilotgesteuert  
Clapet anti-retour simple piloté NG10 -B

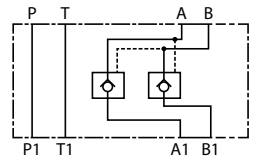


Part n° Referencia	SIZE TAMANO	MAX. PRESSURE (bar) PRESION MAX.(bar)	FLOW (l/min) CAUDAL (l/min)	OIL PORTS A-B TOMAS A-B	€
CHM5-SB/10	NG-10	320	100	B	441,07

## NG10 Pilot operated double check valve



Válvula antirretorno doble pilotada NG10  
Rückschlagventil NG10 doppelt pilotgesteuert  
Clapet anti-retour double piloté NG10

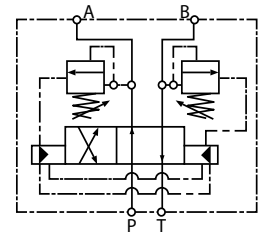


Part n° Referencia	SIZE TAMANO	MAX. PRESSURE (bar) PRESION MAX.(bar)	OIL PORTS A-B TOMAS A-B	€
CHM5-D/10	NG-10	320	A - B	504,09

## NG10 Self-reversing valve



Válvula inversora NG10  
NG10 Automatisches Umkehrventil  
Valve à inversion automatique NG10



Part n° Referencia	MÍN. PRESS. (bar) PRESION MÍN. (bar)	MIN. FLOW (l/min) CAUDAL MÍN. (l/min)	MAX. PRESSURE (bar) PRESION MAX. (bar)	€
DSB5-RTA/10N	60	10	320	415,08

## NG10 reversing valve by pressure



Válvula inversora por presión NG10  
Druckumkehrventil NG10  
Valve NG10 d'inversion par pression

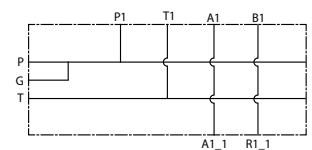
NEW

Part n° Referencia	Min. Press. (bar) Presión MÍN (bar)	Max. Press. (bar) Pres. max. (bar)	Min. flow (l/min) Caudal mín. (l/min)	FLOW MAX (l/min) CAUDAL MAX (l/min)	€
VSIA L10 VM 10	20	100	3	80	502,61
VSIA L10 VM 20	85	260	3	80	502,61

## Subplates for NG10 solenoid valve without relief valve



Placa base NG10 para 1 electroválvula - sin limitadora  
Grundplatte für NG10 Magnetventile ohne Entlastungsventil  
Embase NG10 pour 1 électro. orifices verticaux sans limiteur de pression



Part n° Referencia	THREAD ROSCA	SIZE TAMANO	MAX. PRESSURE (bar) PRESION MAX. (bar)	OIL PORTS A-B TOMAS A-B	€
PBKV-10-12TV	1/2" BSP	NG-10	350	Verticales / Vertical	129,75

Other sizes on request / Otros tamaños bajo consulta / Konsultieren Sie uns für andere Größen / Autres dimensions sur demande